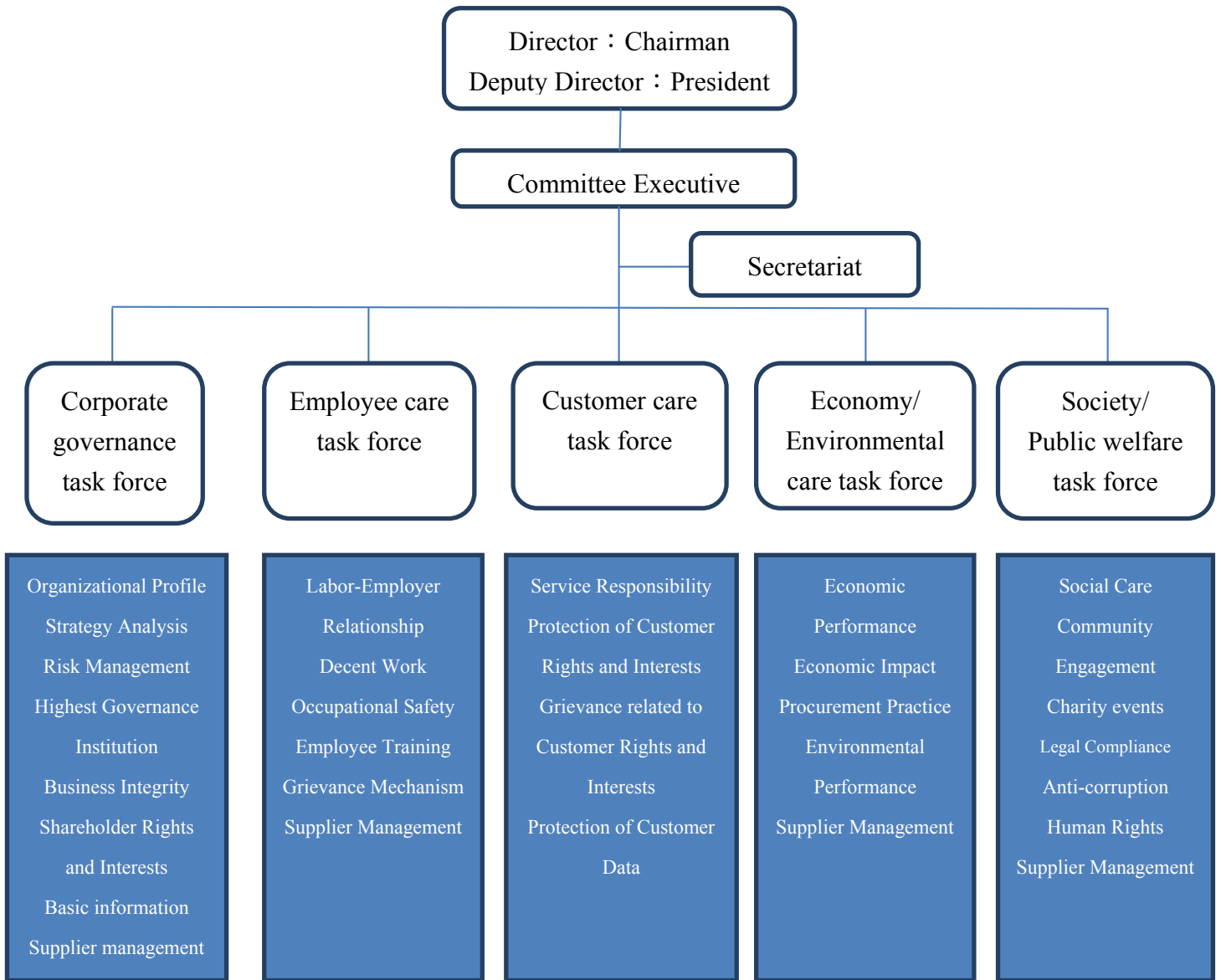


CSR Team



This company has formulated the Wan Hai Lines Ltd. Corporate Social Responsibility Best Practice Principles covering the following areas :

1. Implementation of corporate governance
2. Development of a sustainable environment
3. Maintenance of social welfare
4. Emphasis on employee care
5. Enhancement of customer services
6. Strengthening of supplier management
7. Disclosure of CSR information

It also collects important economic, environmental and social issues, and the CSR report preparation team identifies the concerns of stakeholders through major analysis as a basis for the complete disclosure of the company' s corporate social responsibility. At the same time presents the results of interaction with stakeholders.